

Your reliable partner in the world of cryptocurrency!



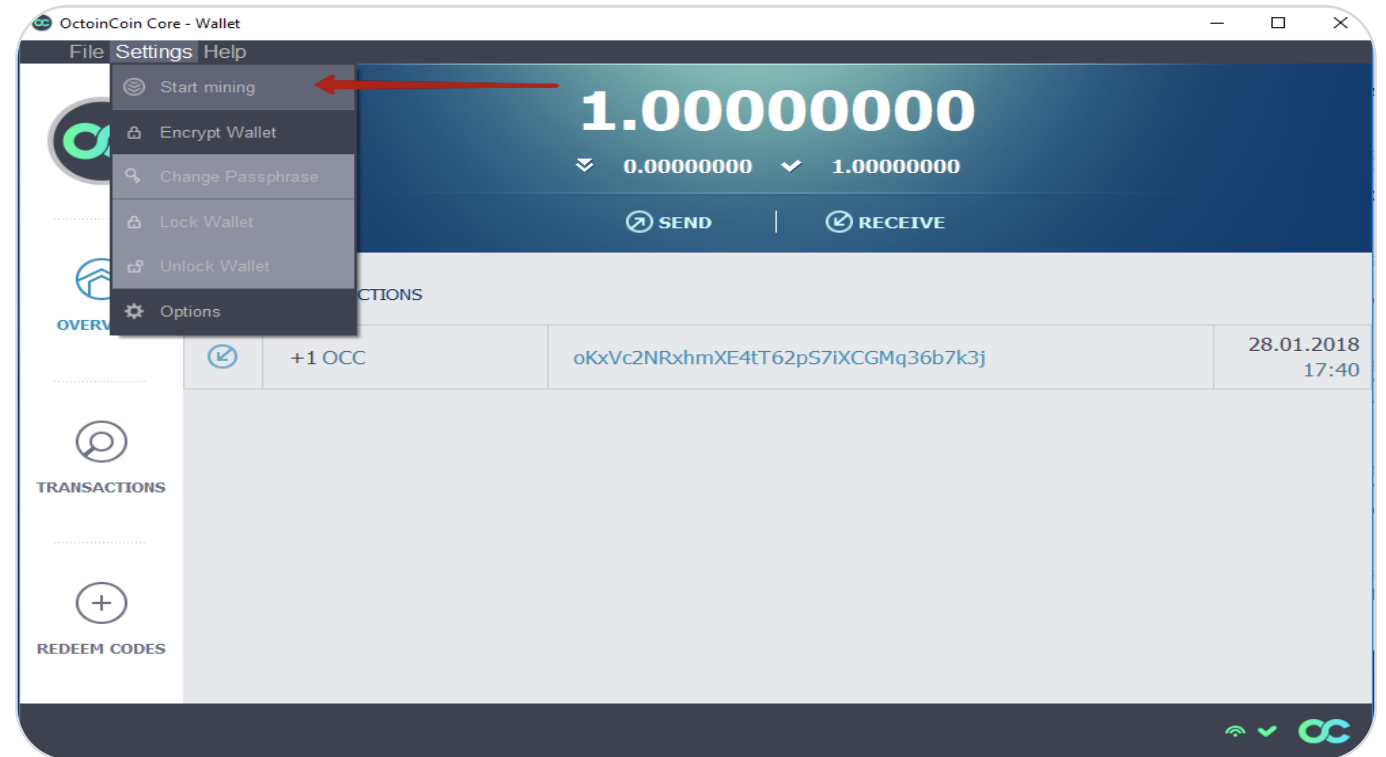
TOIN

How to enable OCC Mining for the Wallet on Windows OS

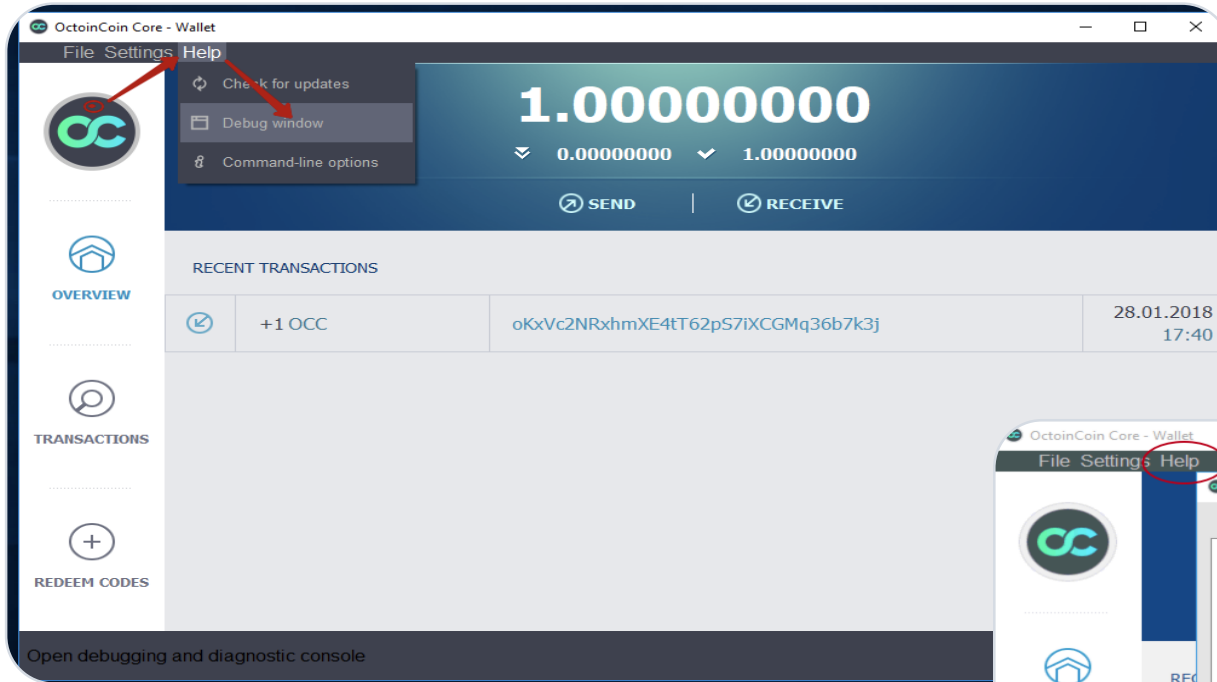
www.octoin.com



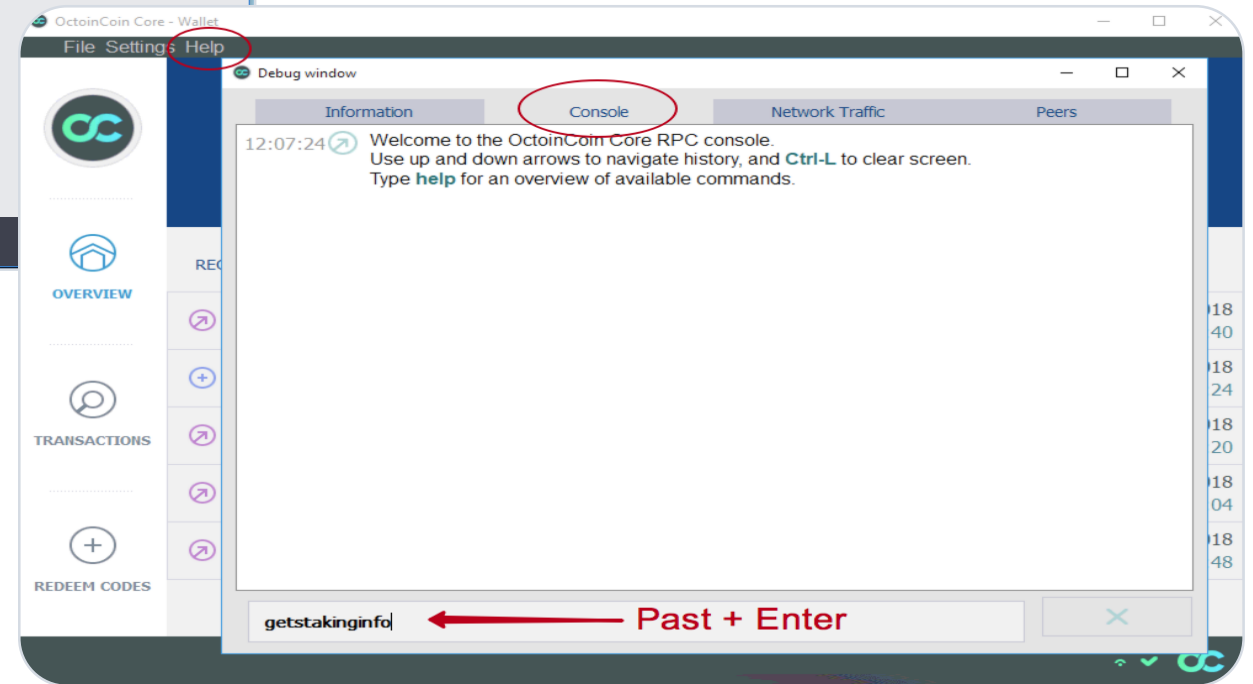
By default, the mining in the wallets is disabled. So, in order to participate in the mining you need to make the following settings:
Open the wallet, select SETTINGS from the top menu and press START MINING. Immediately after clicking the button the POS mining will be enabled on the wallet.



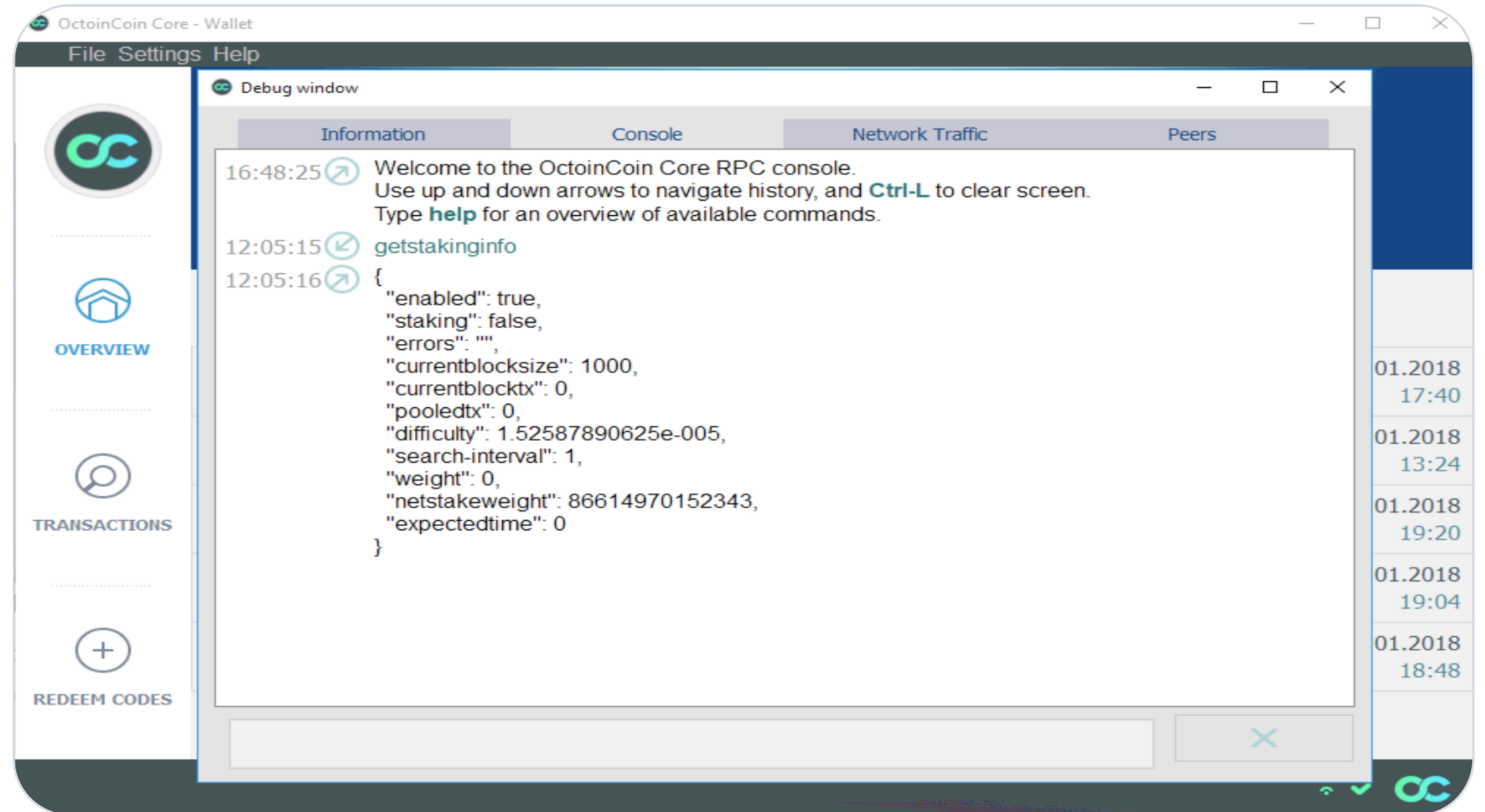
Be sure to check whether mining is working with the command: `getstakinginfo`.
In the wallet menu, press HELP and select the DEBUG WINDOW tab.



Go to CONSOL, type the following at the command prompt: `getstakinginfo` and press ENTER.



After that, you will be shown information about your wallet, where "enabled": true means that your wallet is included in the OCC mining process.



OCTOIN

Your reliable partner in the
world of cryptocurrency!

